

“WEATHER VIEW” DISPLAY SOFTWARE

FEATURES

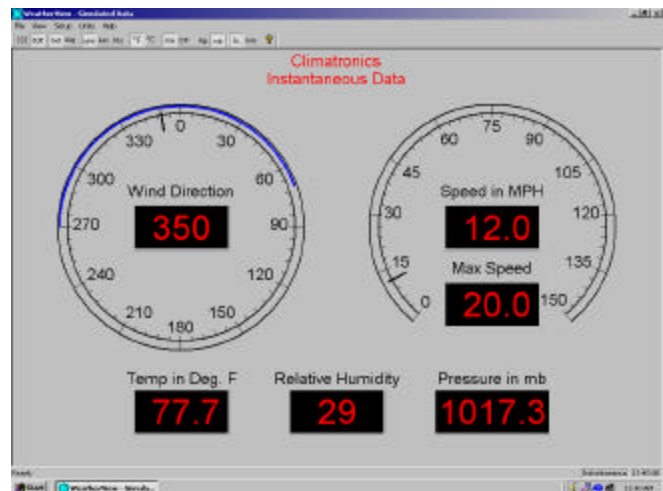
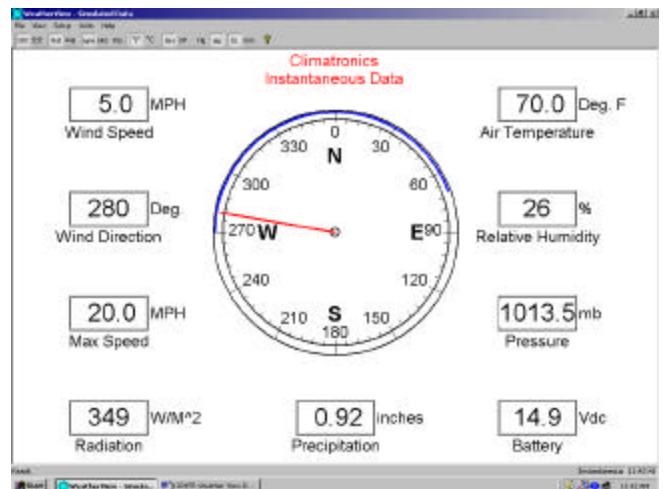
- Application Configurable
- Operates In Windows 95,98, NT & 2000
- Fully Supported/Self Documenting
- Compatible With Common DAS's
- Data Both Displayed & Archived

Climatronics “WeatherView” (WView), P/N 102455, software is a universal display package for the presentation and archiving of meteorological data from a digital weather station. The WView software runs in Windows 95, 98, NT, Me and 2000.

The software accepts a printable ASCII serial data stream as an input. The user defines the location of the various variables in the data stream during the “System Configuration” set-up phase and selects the data averaging period, sensor update period and system name during the “System Settings” phase. The serial interface and the FTP settings are also user controlled from the pull-down setup menu.

Two screens are available. Either one of the screens may be selected at any time by pointing and clicking on the proper toolbar button. The engineering units of the displayed data can also be changed on the fly by selecting the units desired on the toolbar. The selected averaging interval and the current time are both displayed on the window status bar.

The amount of wind direction variability over the selected averaging period is shown as a colored band on the edge of the wind direction circular display. Wind speed gust information based on the highest speed attained during the last averaging period is also displayed if the displayed data are being averaged.



Climatronics Corporation
 140 Wilbur Place
 Bohemia, NY 11716-2404
 TEL: 631-567-7300
 FAX: 631-567-7585
 E-Mail: sales@climatronics.com